

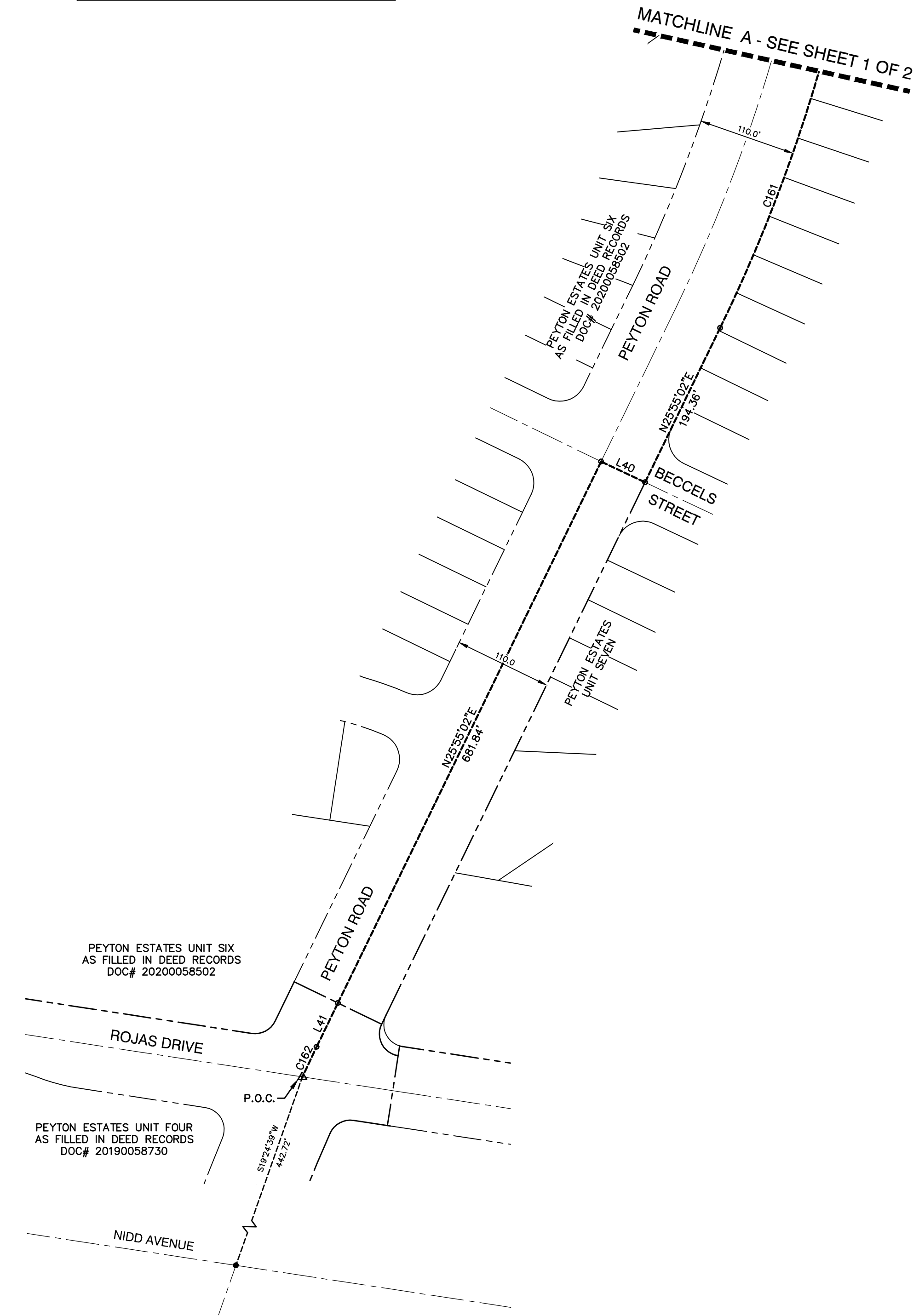
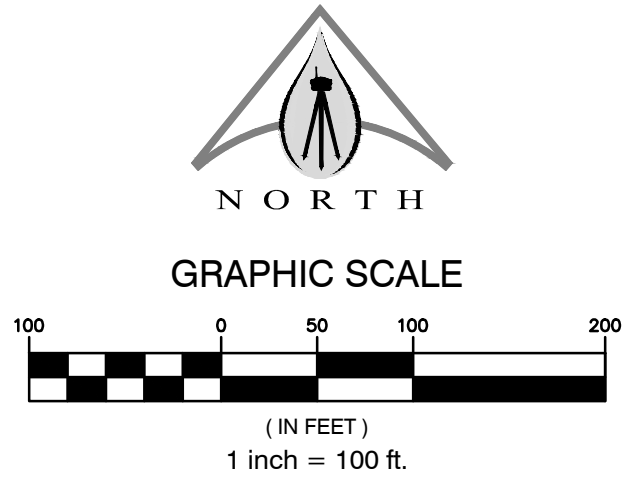
PEYTON ESTATES

UNIT EIGHT

BEING A PORTION OF C.D. STEWART SURVEY NO. 318,
EL PASO COUNTY, TEXAS
CONTAINING IN ALL 3,055,592.27 SQ.FT. OR 70.147
ACRES OF LAND MORE OR LESS

PLAT NOTES AND RESTRICTIONS:

- THIS IS TO CERTIFY THAT WATER AND SEWER SERVICES WILL BE PROVIDED TO PEYTON ESTATES UNIT EIGHT BY THE PASEO DEL ESTE MUNICIPAL UTILITY DISTRICT NO. 1 IN ACCORDANCE WITH THEIR RULES AND REGULATIONS AND WITH SECTION 16.343 OF THE TEXAS WATER CODE. WATER AND SEWER SERVICES WILL BE EXTENDED TO THE SUBDIVISION FROM EXISTING FACILITIES LOCATED ON ROJAS DRIVE AND WILL BE CONSTRUCTED TO SERVE THIS SUBDIVISION WITHIN TWO (2) YEARS OF DATE OF THE FILING OF THIS PLAT.
- BUILDINGS SHALL BE SET BACK AS FOLLOWS: FRONT LOT SETBACK A MINIMUM OF 20 FEET, SIDE LOT SETBACK A MINIMUM OF 5 FEET, SIDE LOT ABUTTING STREET (ROAD) A MINIMUM OF 10 FEET, AND BACK LOT SETBACK A MINIMUM BE 20 FEET. THESE SETBACKS DISTANCES SHALL NOT CONFLICT WITH SEPARATION OR SETBACK DISTANCES REQUIRED BY RULES GOVERNING PUBLIC UTILITIES, ON-SITE SEWAGE FACILITIES, OR DRINKING WATER SUPPLIES.
- THIS SYMBOL REPRESENTS ALL PROPOSED STREET MONUMENT LOCATIONS.
- PROPERTY CORNERS WILL BE SET UPON COMPLETION OF CONSTRUCTION OF ROADWAYS AND UTILITIES.
- SET 1/2"Ø REBAR WITH YELLOW PLASTIC CAP STAMPED TX 5572, UNLESS OTHERWISE NOTED, AT ALL EXTERIOR BOUNDARY CORNERS UNLESS OTHERWISE NOTED.
- NO MORE THAN ONE SINGLE-FAMILY DETACHED DWELLING SHALL BE LOCATED ON EACH LOT.
- BUILDER IS RESPONSIBLE FOR THE CONSTRUCTION OF A 5 (FIVE) FOOT WIDE CONCRETE SIDEWALK AS PART OF THE CONSTRUCTION OF IMPROVEMENTS. THE SIDEWALKS ARE LOCATED ALONG FRONT, REAR AND SIDES OF EACH LOT WHERE THE LOT ABUTS A PUBLIC ROAD.
- BUILDER IS RESPONSIBLE FOR THE CONSTRUCTION OF CONCRETE DRIVEWAYS BETWEEN THE ROAD CURB AND THE PROPERTY LINE AS PART OF THE CONSTRUCTION OF IMPROVEMENTS.
- THE DEVELOPER SHALL OBTAIN A PERMIT FROM THE COUNTY ROAD AND BRIDGE DEPARTMENT PRIOR TO CUTTING ANY EXISTING COUNTY ROAD FOR INSTALLATION OF UTILITIES, CONSTRUCTION OF DRIVEWAYS, OR ANY OTHER PURPOSE.
- THIS PROPERTY LIES IN ZONE X, AS DESIGNATED BY F.E.M.A.; COUNTY OF EL PASO, COMMUNITY PANEL NO. 480 212 0237 B, DATED SEPTEMBER 4, 1991. CONSTRUCTION OF RESIDENTIAL HOUSING WITHIN ANY AREA OF THE SUBDIVISION THAT IS IN THE 100-YEAR FLOOD PLAIN IS PROHIBITED UNLESS THE HOUSING QUALIFIES FOR INSURANCE UNDER THE NATIONAL FLOOD INSURANCE ACT OF 1968 (42 U.S.C. SECTIONS 4001 THROUGH 4127).
- HUNT PEYTON ESTATES L.L.C., THE OWNER AND SUBDIVIDER OF PEYTON ESTATES UNIT EIGHT, WILL INSTALL ALL UTILITY SERVICE LINES TO THE PROPERTY LINES UNLESS OTHERWISE APPROVED, IN WRITING, BY THE COUNTY ENGINEER.
- ROADS WILL NOT BE MAINTAINED BY THE COUNTY OF EL PASO UNTIL PAID BY HUNT PEYTON ESTATES L.L.C., AND LEGALLY APPROVED AND ACCEPTED BY THE COUNTY OF EL PASO.
- HUNT PEYTON ESTATES L.L.C., SHALL PROVIDE ADEQUATE STORM RUNOFF AND PONDING PROVISIONS PRIOR TO SALE OF ANY LOTS.
- LANDSCAPE AND PARKWAY FACILITIES SHALL BE MAINTAINED PURSUANT TO THE INTER-LOCAL AGREEMENT DATED NOVEMBER 21, 2005, BY PASEO DEL ESTE MUNICIPAL UTILITY DISTRICT (M.U.D.) NO. 1 AND THE COUNTY OF EL PASO, TEXAS FOR MAINTENANCE OF MEDIANS, RIGHT-OF-WAYS, AND ASSOCIATED AREAS, WITHIN PIPE MUD LANDSCAPE EASEMENTS SHOWN ON THIS PLAT SO LONG AS THE AGREEMENT IS IN EFFECT.
- LOT OWNERS SHALL BE RESPONSIBLE FOR MAINTAINING THE SIDEWALKS, DRIVEWAYS, AND PARKWAYS ABUTTING THEIR PROPERTY.
- PEYTON ESTATES UNIT EIGHT IS LOCATED WITHIN THE BOUNDARIES OF THE PASEO DEL ESTE MUNICIPAL UTILITY DISTRICT NO. 1 (MUD NO. 1). WATER AND WASTEWATER SERVICE TO THIS SUBDIVISION WILL BE PROVIDED BY THE DISTRICT IN ACCORDANCE WITH ITS RULES AND REGULATIONS. ALL CONSTRUCTION PLANS FOR WATER, WASTEWATER, AND STORM DRAINAGE IMPROVEMENTS MUST BE PRESENTED TO THE DISTRICT AND APPROVED BY THE DISTRICTS' ENGINEER PRIOR TO BEGINNING CONSTRUCTION ACTIVITIES. ALL WATER, WASTEWATER, AND STORM DRAINAGE EASEMENTS AND IMPROVEMENTS SHALL BE OWNED OR LEASED TO, AND OPERATED AND MAINTAINED BY THE DISTRICT IN ACCORDANCE WITH ITS RULES AND REGULATIONS.
- NO LOT IN THIS SUBDIVISION SHALL BE OCCUPIED UNTIL CONNECTED TO THE DISTRICT WATER AND SANITARY SEWER SYSTEM, PURSUANT TO RULES AND REGULATIONS OF THE DISTRICT, AND MUD NO. 1, AND OTHER APPLICABLE STATE AND LOCAL RULES AND REGULATIONS.
- THE STORM WATER RUNOFF FROM PEYTON ESTATES UNIT EIGHT WILL BE CONVEYED INTO TWO ON-SITE RETENTION BASIN.
- LOT 31, BLOCK 51, AND LOT 6, BLOCK 63 ARE DESIGNATED AS PONDING AREAS AND RETENTION PONDS. NO DWELLING/OCCUPANCY SHALL BE PERMITTED ON LOTS. THESE LOTS SHALL BE DEEDED TO AND MAINTAINED BY THE PASEO DEL ESTE MUNICIPAL UTILITY DISTRICT 1.
- IN ACCORDANCE WITH TEXAS LOCAL GOVERNMENT CODE 232.025(6), IT IS HEREBY EXPRESSED THAT ALL PURCHASE CONTRACTS MADE BETWEEN AND A PURCHASER OF LAND IN THIS SUBDIVISION WILL CONTAIN A STATEMENT DESCRIBING WHEN WATER, SEWER, ELECTRICITY, AND GAS SERVICES WILL BE MADE AVAILABLE TO THIS SUBDIVISION.
- VEHICULAR ACCESS TO LOTS ABUTTING PEYTON ROAD, SHALL BE FROM OTHER DEDICATED STREETS ONLY. THE INSTRUMENT ASSURING RELEASE OF ACCESS IS FILED IN THE EL PASO COUNTY CLERK'S OFFICE, _____ DATE _____
- TAX CERTIFICATE(S) FOR PEYTON ESTATES UNIT EIGHT ARE FILED IN THE EL PASO COUNTY CLERK'S OFFICE, _____ DATE _____
- RESTRICTIVE COVENANTS FOR PEYTON ESTATES UNIT EIGHT ARE FILED IN THE EL PASO COUNTY CLERK'S OFFICE, _____ DATE _____
- LANDSCAPE EASEMENTS ABUTTING ALLEYS SHALL BE MAINTAINED BY THE OWNER AND USED AS A PARKWAY ONLY. ROCKWALLS AND FENCING ARE PROHIBITED WITHIN THE LANDSCAPE EASEMENT.



AREA TABLE		
PARCEL DESIGNATION	SQUARE FOOTAGE	ACRES
RESIDENTIAL	1,899,364.88 SQ.FT.	43.604 AC.
PARK	94,586.00 SQ.FT.	2.171 AC.
POND/DRAINAGE RIGHT-OF-WAY	140,445.07 SQ.FT.	3.224 AC.
RIGHT-OF-WAY	901,247.68 SQ.FT.	20.690 AC.
ALLEY RIGHT-OF-WAY	19,948.63 SQ.FT.	0.458 AC.
TOTAL	3,055,592.26 SQ.FT.	70.147 AC.

RIGHT-OF-WAY TABLE	
STREET NAME	LINEAR FEET
PEYTON ROAD	1,445.73 FT.
EMMAROSE WAY	471.54 FT.
ADAMTOWNE DRIVE	146.81 FT.
OAKHAMPTON AVENUE	1,662.65 FT.
LODDON STREET	1,039.95 FT.
BROMSGROVE PLACE	132.00 FT.
FRODSHAM STREET	1,316.40 FT.
EMERALD HILLS AVENUE	1,606.96 FT.
CLEETHORPES STREET	1,822.27 FT.
COLEFORD LANE	624.82 FT.
HECTOR PORRAS DRIVE	1,203.30 FT.
KINGTON AVENUE	1,094.61 FT.
SALTERTON AVENUE	1,094.22 FT.
CAINE PLACE	409.14 FT.
NAILSEAS PLACE	935.88 FT.
HORNSEY PLACE	673.98 FT.

LINE TABLE			
LINE	BEARING	LENGTH	
L1	N75°04'58"W	110.00'	
L2	N64°46'39"E	110.00'	
L3	N87°33'16"W	159.53'	
L4	S2°21'40"W	5.46'	
L5	N76°54'46"W	161.00'	
L6	N77°07'28"W	105.00'	
L7	N9°20'37"E	62.19'	
L8	N74°51'27"W	63.08'	
L9	S74°51'27"E	89.65'	
L10	S87°33'16"E	71.04'	
L11	N12°58'24"W	55.98'	
L12	N87°24'57"E	22.18'	
L13	N23°03'54"W	89.06'	
L14	N87°33'36"W	90.33'	
L15	S87°33'36"E	56.92'	
L16	N2°21'40"E	56.92'	
L17	S12°58'24"E	4.29'	
L18	S74°51'27"E	11.11'	
L19	S87°33'16"E	24.04'	
L20	N87°33'16"W	24.04'	
L21	N87°33'36"W	20.00'	
L22	N87°33'16"W	20.00'	
L23	S2°21'40"W	20.00'	
L24	N87°33'36"W	3.87'	
L25	S2°22'20"W	9.38'	
L26	S2°22'20"W	2.49'	
L27	S86°49'16"E	85.78'	
L28	S88°09'27"E	85.71'	
L29	N2°21'40"E	20.00'	
L30	S2°22'20"W	20.00'	
L31	N87°33'36"W	16.59'	
L32	N2°21'40"E	25.30'	
L33	N87°33'36"W	22.70'	
L34	N87°33'36"W	20.57'	
L35	N11°45'36"W	10.90'	
L36	N12°58'24"W	18.10'	
L37	N17°46'42"W	26.05'	
L38	S87°33'16"E	105.66'	
L39	S87°33'16"E	105.66'	
L40	S64°41'30"E	55.00'	
L41	N25°55'02"E	55.23'	

CURVE TABLE						
CURVE	RADIUS	LENGTH	TANGENT	CHORD	BEARING	DELTA
C82	20.00'	31.45'	20.03'	28.31'	N47°24'12"E	90°05'05"
C83	20.00'	31.39'	19.97'	28.26'	S42°35'48"E	89°54'55"
C84	20.00'	31.44'	20.03'	28.30'	S47°24'02"W	90°04'45"
C85	20.00'	31.39'	19.97'	28.26'	N42°35'58"W	89°55'15"
C86	20.00'	31.45'	20.03'	28.31'	N47°24'12"E	90°05'05"
C87	20.00'	31.39'	19.97'	28.26'	S42°35'48"E	89°54'55"
C88	20.00'	31.44'	20.03'	28.30'	S47°24'02"W	90°04'45"
C89	20.00'	31.39'	19.97'	28.26'	N42°35'58"W	89°55'15"
C90	20.00'	31.45'	20.03'	28.31'	N47°24'12"E	90°05'05"
C91	20.00'	30.58'	19.18'	27.69'	S50°46'49"E	87°35'57"
C92	2009.31'	37.02'	18.51'	37.02'	N7°30'31"W	1°03'21"
C93	2009.31'	53.20'	26.60'	53.20'	N8°47'42"W	1°31'01"
C94	2009.31'	53.20'	26.60'	53.20'	N10°18'43"W	1°31'01"
C95	2009.31'	53.20'	26.60'	53.20'	N11°49'44"W	1°31'01"
C96	2009.31'	53.20'	26.60'	53.20'	N13°20'46"W	1°31'01"
C97	2009.31'	53.20'	26.60'	53.20'	S88°21'44"W	1°31'01"
C98	2009.31'	53.20'	26.60'	53.20'	N16°22'48"W	1°31'01"
C99	2009.31'	53.20'	26.60'	53.20'	N17°53'50"W	1°31'01"
C100	2009.31'	53.13'	26.57'	53.13'	N19°24'48"W	1°30'54"
C101	2009.31'	56.36'	28.18'	56.35'	N20°58'27"W	1°36'25"
C102	30.00'	59.80'	46.39'	50.38'	S35°19'52"W	114°13'04"
C103	20.00'	23.51'	22.18'	N5°52'44"W	67°21'42"	
C104	2219.31'	37.00'	18.50'	37.00'	N19°43'14"W	0°57'19"
C105	2219.31'	59.98'	29.99'	59.98'	N18°28'07"W	1°32'55"
C106	2219.31'	53.80'	26.90'	53.80'	N17°00'00"W	1°23'20"
C107	2219.31'	53.80'	26.90'	53.80'	N15°36'39"W	1°23'20"
C108	2219.31'	53.80'	26.90'	53.80'	N14°13'19"W	1°23'21"
C109	2219.31'	21.47'	10.73'	21.47'	N13°15'01"W	0°33'15"
C110	20.00'	34.35'	23.17'	30.28'	N36°13'25"E	98°23'36"
C111	20.00'	25.70'	14.97'	23.97'	S50°44'51"E	73°37'30"
C112	2273.31'	100.37'	50.19'	100.36'	N15°11'59"W	2°31'46"
C113	2273.31'	21.17'	10.59'	21.17'	N16°43'53"W	0°32'01"
C114	2273.31'	88.24'	44.12'	88.23'	N18°06'37"W	2°13'26"
C115	20.00'	38.98'	29.46'	33.10'	S36°36'32"W	111°39'44"
C116	20.00'	31.39'	19.97'	28.26'	N42°35'58"W	89°55'15"
C117	20.00'	30.23'	18.84'	27.43'	N45°39'23"E	86°35'26"
C118	800.00'	42.37'	21.19'	42.36'	S89°31'52"E	3°02'04"
C119	800.00'	6.34'	3.17'	6.34'	S87°47'13"E	0°27'15"
C120	20.00'	33.14'	21.81'	29.48'	S45°06'42"E	94°56'43"
C121	20.00'	31.44'	20.03'	28.30'	S47°24'02"W	90°04'45"
C122	30.00'	47.08'	29.96'	42.40'	N42°35'58"W	89°55'15"
C123	20.00'	31.44'	20.03'	28.30'	N47°24'02"E	90°04'45"
C124	854.00'	51.43'	25.72'	51.43'	N89°17°07"W	3°27'03"
C125	854.00'	23.46'	11.73'	23.45'	S88°12'09"W	1°34'25"
C126	30.00'	45.61'	28.52'	41.34'	S51°01'41"E	87°06'14"
C127	1850.31'	34.97'	17.48'	34.96'	N8°01'03"W	1°04'58"
C128	1850.31'	56.40'	28.20'	56.40'	N9°25'55"W	1°44'48"
C129	1850.31'	57.10'	28.55'	57.10'	N11°11'22"W	1°46'05"
C130	1850.31'	56.78'	28.39'	56.78'	N12°57'09"W	1°45'30"
C131	1850.31'	56.66'	28.33'	56.66'	N14°42'32"W	1°45'16"
C132	1850.31'	56.78'	28.39'	56.78'	N16°27'55"W	1°45'30"
C133	1850.31'	56.24'	28.12'	56.24'	N18°12'55"W	1°44'30"
C134	1850.31'	57.32'	28.66'	57.32'	N19°58'24"W	1°46'30"
C135	1850.31'	57.32'	28.66'	57.32'	N21°44'54"W	1°46'30"
C136	1850.31'	83.53'	41.77'	83.53'	N23°55'45"W	2°35'12"
C137	20.00'	31.39'	19.97'	28.26'	S42°35'58"E	89°55'15"
C138	40.00'	8.25'	4.14'	8.24'	S81°6'22"W	1°14'9'26"
C139	65.00'	21.62'	10.91'	21.52'	N4°39'24"E	19°03'23"
C140	65.00'	40.77'	21.08'	40.11'	N22°50'27"W	35°56'19"
C141	65.00'	39.35'	20.30'	38.75'	N58°09'05"W	34°40'58"
C142	65.00'	27.10'	13.75'	26.91'	N87°26'18"W	23°53'27"
C143	40.00'	8.25'	4.14'	8.24'	N86°31'42"E	1°14'9'26"
C144	40.00'	8.18'	4.10'	8.16'	S81°42'09"E	1°14'2'54"
C145	70.00'	21.22'	10.69'	21.14'	N84°31'49"W	17°22'14"
C146	70.00'	43.87'	22.68'	43.16'	S68°49'47"W	35°54'35"
C147	70.00'	43.87'	22.68'	43.16'	S32°55'12"W	35°54'35"
C148	70.00'	43.87'	22.68'	43.16'	S2°59'23"E	35°54'35"
C149	70.00'	15.32'	7.69'	15.29'	S27°12'57"E	12°32'34"
C150	40.00'	8.11'	4.07'	8.10'	N27°40'31"W	11°37'25"
C151	1955.31'	34.22'	17.11'	34.22'	N21°21'44"W	1°00'10"
C152	1955.31'	60.57'	30.29'	60.57'	N19°58'24"W	1°46'30"
C153	1955.31'	59.43'	29.72'	59.43'	N18°12'55"W	1°44'30"
C154	1955.31'	60.00'	30.00'	60.00'	N16°27'55"W	1°45'30"
C155	1955.31'	59.88'	29.94'	59.87'	N14°42'32"W	1°45'16"
C156	1955.31'	60.00'	30.00'	60.00'	N12°57'09"W	1°45'30"
C157	1955.31'	60.34'	30.17'	60.34'	N11°11'22"W	1°46'05"
C158	1955.31'	59.67'	29.84'	59.67'	N9°25'52"W	1°44'54"
C159	1955.31'	49.81'	24.91'	49.81'	N7°49'38"W	1°27'35"
C160	20.00'	32.16'	20.76'	28.80'	N38°57'58"E	92°07'30"
C161	1850.31'	355.23'	178.16'	354.69'	N20°25'02"E	11°00'00"
C162	2282.92'	37.63'	18.82'	37.63'	N25°26'51"E	0°56'40"

CURVE TABLE						
CURVE	RADIUS	LENGTH	TANGENT	CHORD	BEARING	DELTA
C1	1740.31'	1219.21'	635.82'	1194.43'	N5°09'09"W	40°08'23"
C2	1955.31'	8.39'	4.20'	8.39'	N12°59'55"E	0°14'45"
C3	1850.31'	65.94'	32.97'	65.94'	N13°53'47"E	2°02'31"
C4	1795.31'	637.93'	322.36'	634.58'	N4°44'16"E	20°21'32"
C5	1795.31'	619.81'	313.02'	616.73'	N15°19'55"W	19°46'50"
C6	1982.31'	568.00'	285.96'	566.06'	N13°34'09"W	16°25'02"
C7	57.00'	113.63'	88.14'	95.73'	S35°19'52"W	114°13'04"
C8	57.00'	89.46'	56.92'	80.55'	N42°35'58"W	89°55'15"
C9	1982.31'	99.60'	49.81'	99.59'	N11°40'54"E	2°52'44"
C10	57.00'	94.41'	62.10'	83.98'	S57°41'33"W	94°54'01"
C11	480.00'	106.37'	53.40'	106.15'	S81°12'21"E	12°41'49"
C12	527.00'	141.82'	71.34'	141.39'	N51°55'00"W	15°25'08"
C13	2246.31'	2.61'	1.31'	2.61'	N13°00'23"W	0°04'00"
C14	2246.31'	312.06'	156.28'	311.81'	N17°01'11"W	7°57'35"
C15	827.00'	72.52'	36.28'	72.50'	N89°55'41"E	5°10'28"
C16	827.00'	27.32'	13.66'	27.32'	S88°21'44"W	15°33'35"
C17	827.00'	45.20'	22.60'	45.19'	N89°07'32"W	3°70'53"
C18	1850.31'	47.00'	23.50'	47.00'	N12°08'51"E	1°27'20"
C19	1850.31'	47.00'	23.50'	47.00'	N10°41'32"E	1°27'20"
C20	1850.31'	47.00'	23.50'	47.00'	N9°12'41"E	1°27'20"
C21	1850.31'	56.25'	28.13'	56.24'	N7°38'18"E	1°44'30"
C22	1850.31'	250.38'	125.38'	250.19'	N2°53'27"E	7°45'11"
C23	1850.31'	75.73'	37.87'	75.72'	N2°09'29"W	2°20'42"
C24	30.00'	46.47'	29.35'	41.96'	S41°02'41"W	88°45'03"
C25	20.00'	28.49'	17.27'	26.14'	N53°46'35"W	81°36'24"
C26	500.00'	83.94'	42.07'	83.84'	N8°05'50"W	3°37'08"
C27	500.00'	50.62'	25.33'	50.59'	N0°27'16"E	5°48'00"
C28	20.00'	35.85'	25.01'	31.24'	N53°47'39"E	102°41'49"
C29	40.00'	13.59'	6.86'	13.52'	S65°07'30"E	19°27'53"
C30	70.00'	43.39'	22.42'	42.70'	N73°08'55"W	35°30'44"
C31	70.00'	66.13'	35.77'	63.70'	S62°01'49"W	54°07'47"
C32	70.00'	45.81'	23.76'	45.05'	S16°12'58"W	37°29'55"
C33	70.00'	8.07'	4.04'	8.06'	S5°50'08"E	6°16'38"
C34	40.00'	13.83'	6.99'	13.76'	N40°06'35"E	19°48'39"
C35	1955.31'	25.50'	12.75'	25.50'	N11°02'48"E	0°44'50"
C36	1955.31'	49.67'	24.84'	49.67'	N12°08'52"E	1°17'20"
C37	2009.31'	100.94'	50.48'	100.93'	N11°40'53"E	2°52'44"
C38	30.00'	49.69'	32.66'	44.20'	S57°41'33"W	94°54'01"
C39	507.00'	43.23'	21.63'	43.22'	S77°18'01"E	45°33'08"
C40	507.00'	55.16'	27.61'	55.13'	S82°51'35"E	61°41'01"
C41	507.00'	13.96'	6.98'	13.96'	S86°45'56"E	1°34'40"
C42	20.00'	31.42'	20.00'	28.28'	N42°33'16"W	90°00'00"
C43	20.00'	31.42'	20.00'	28.28'	S47°26'44"W	90°00'00"
C44	20.00'	31.42'	20.00'	28.28'	N42°33'16"W	90°00'00"
C45	20.00'	31.42'	20.00'	28.28'	S47°26'44"W	90°00'00"
C46	20.00'	31.39'	19.97'	28.26'	N42°35'48"W	89°54'55"
C47	20.00'	31.44'	20.03'	28.30'	S47°24'02"W	90°04'45"
C48	20.00'	31.42'	20.00'	28.29'	S47°33'32"E	90°00'33"
C49	20.00'	31.42'	20.00'	28.28'	S47°26'44"W	90°00'00"
C50	20.00'	31.39'	19.97'	28.26'	N42°35'48"W	89°54'55"
C51	20.00'	31.45'	20.03'	28.31'	S47°24'12"E	90°05'05"
C52	20.00'	31.39'	19.97'	28.26'	S42°35'48"W	89°54'55"
C53	20.00'	31.45'	20.03'	28.31'	S47°24'12"W	90°05'05"
C54	20.00'	31.39'	19.97'	28.26'	N42°35'48"W	89°54'55"
C55	20.00'	31.45'	20.03'	28.31'	N47°24'12"E	90°05'05"
C56	20.00'	31.42'	20.00'	28.28'	S42°33'16"E	90°00'00"
C57	20.00'	31.42'	20.00'	28.28'	S47°26'44"W	90°00'00"
C58	20.00'	31.39'	19.97'	28.26'	N42°35'48"W	89°54'55"
C59	20.00'	31.45'	20.03'	28.31'	N47°24'12"E	90°05'05"
C60	20.00'	31.39'	19.97'	28.26'	S42°35'48"E	89°54'55"
C61	20.00'	31.45'	20.03'	28.31'	S47°24'12"E	90°05'05"
C62	20.00'	31.39'	19.97'	28.26'	N42°35'48"W	89°54'55"
C63	20.00'	31.45'	20.03'	28.31'	N47°24'12"E	90°05'05"
C64	20.00'	26.98'	16.66'	24.98'	S36°12'21"E	77°18'11"
C65	554.00'	15.32'	7.60'	15.32'	N1°39'12"E	1°35'05"
C66	554.00'	47.13'	23.58'	47.12'	N1°34'34"W	4°52'27"
C67	554.00'	47.59'	23.81'	47.58'	N6°28'27"W	4°55'19"
C68	554.00'	39.04'	19.53'	39.03'	N10°57'15"W	4°02'16"
C69	20.00'	36.80'	26.26'	31.82'	S39°44'00"W	105°24'48"
C70	20.00'	31.42'	20.00'	28.29'	S42°33'26"W	90°00'20"
C71	20.00'	31.42'	20.00'	28.28'	N47°26'44"W	90°00'00"
C72	453.00'	61.15'	30.62'	61.10'	S83°41'15"E	7°44'02"
C73	453.00'	39.24'	19.63'	39.23'	S77°20'20"E	4°57'48"
C74	20.00'	31.42'	20.00'	28.28'	S42°33'16"E	90°00'00"
C75	20.00'	31.41'	20.00'	28.28'	S47°26'34"W	89°59'40"
C76	854.00'	46.53'	23.27'	46.52'	S89°07'14"E	3°07'17"
C77	20.00'	32.48'	21.09'	29.03'	N44°09'37"W	93°02'33"
C78	20.00'	31.45'	20.03'	28.31'	N47°24'12"E	90°05'05"
C79	20.00'	31.39'	19.97'	28.26'	S42°35'48"W	89°54'55"
C80	20.00'	29.69'	18.34'	27.04'	S44°53'18"W	89°53'17"
C81	20.00'	33.14'	21.81'	29.48'	N45°06'42"W	94°06'43"