

# BRIEFING ON FIREWORKS 2020

*EL PASO COUNTY ADMINISTRATION*

*JUNE 29, 2020*



# COUNTY CAN . . .



1. Do nothing.
  - Firework sale period began Wed., June 24<sup>th</sup> and runs through midnight July 4<sup>th</sup>
2. **NO LONGER POSSIBLE:** Restrict skyrocketers with sticks and missiles with fins ( Local Gov't Code§352.051) **before** June 15<sup>th</sup>:
  - 575 average on the Keetch-Byram Drought Index (KBDI)
  - KBDI ranges from 0-800
3. **NOW POSSIBLE:** County Judge can issue Declaration of Local Disaster ( Gov't Code§418.108) if drought conditions exist.
  - Meet 575 KBDI.
  - Texas Forest Service runs assessment and provides feedback to the Governor.
  - Declaration lasts seven days unless the Court extends it.
  - Under the declaration a ban on the sale, use or possession of fireworks could last for up to 60 hours unless the Governor grants an extension.

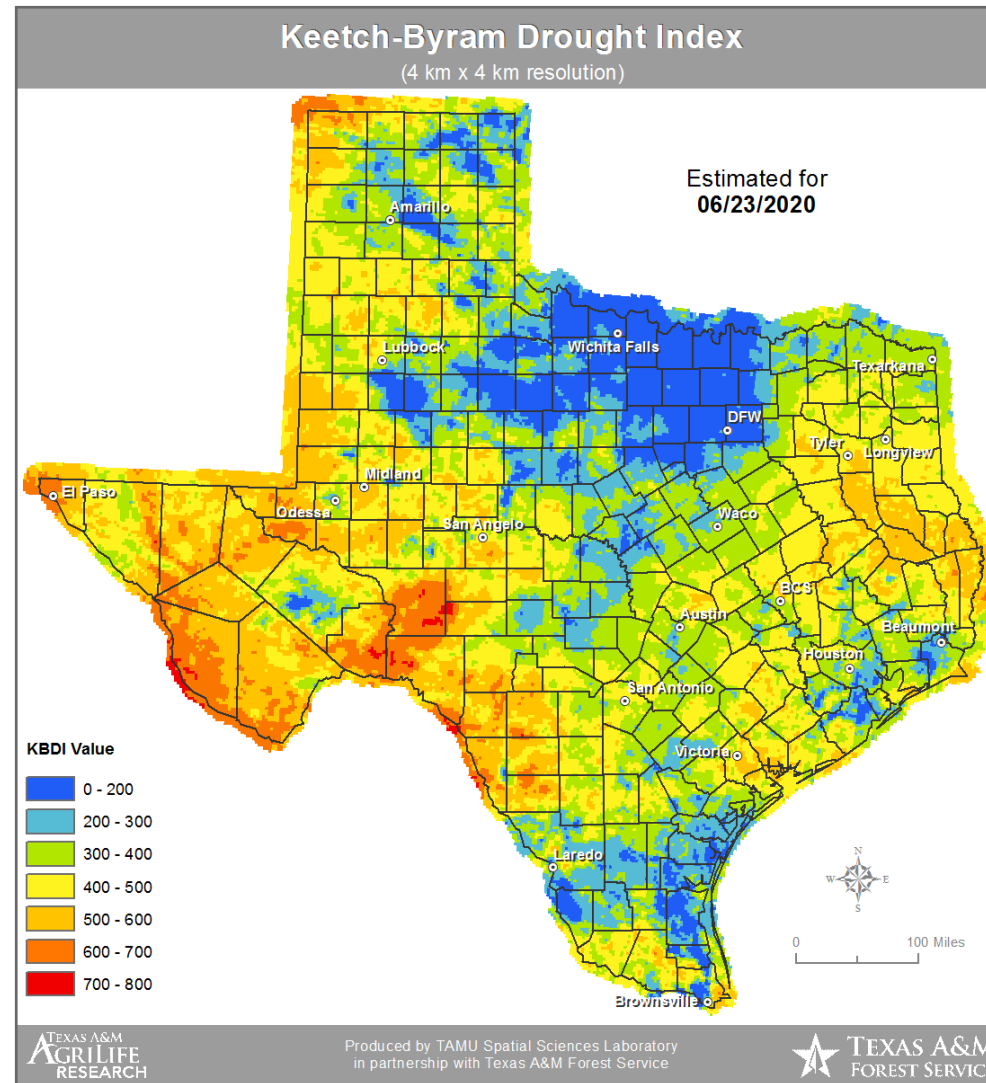
# KEETCH-BYRAM DROUGHT INDEX



## KBDI averages, June 29 (Monday)

1. Presidio 618
2. Crockett 607
3. Terrell 589
4. Val Verde 584
- 5. El Paso 581**

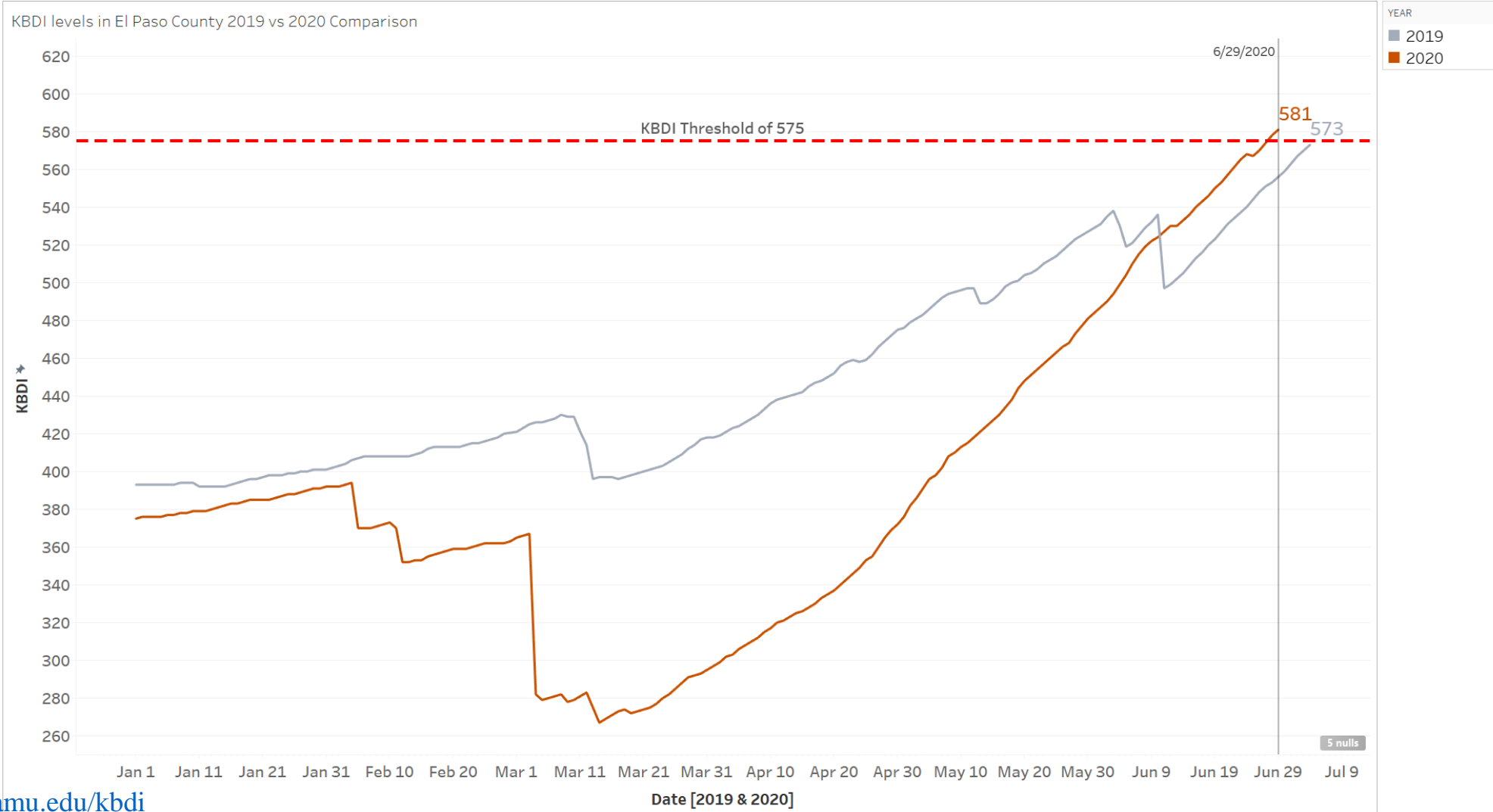
Source: <https://twc.tamu.edu/kbdi>



# KBDI TRENDS, 2019 & 2020



KBDI Levels in El Paso County 2019 vs 2020 Comparison



Credit: Jacob Meils

Source: <https://twc.tamu.edu/kbdi>

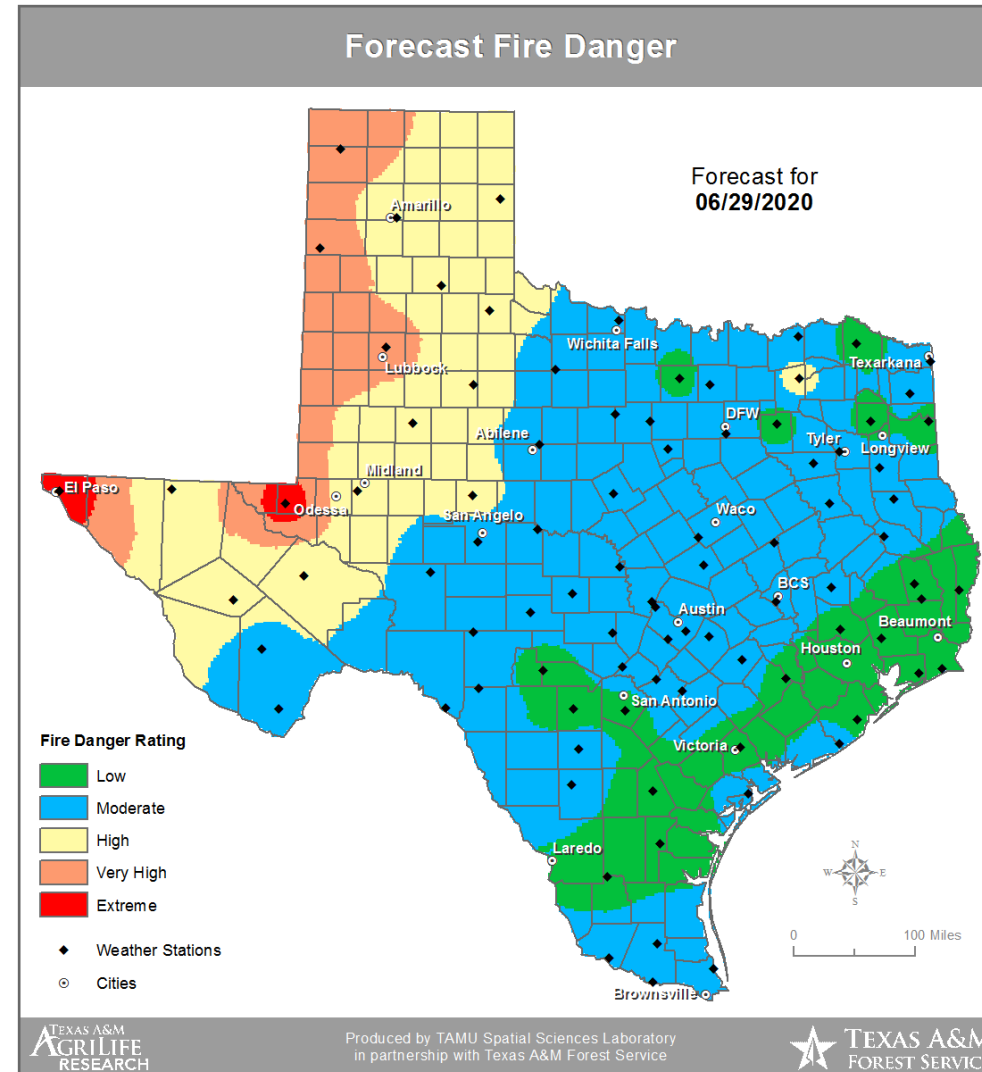


# FORECAST FIRE DANGER



- El Paso County now listed as having “extreme” fire danger.
- Over the last two weeks, it has fluctuated between being listed as “moderate” or “high.”

Source: <https://twc.tamu.edu/tfd>

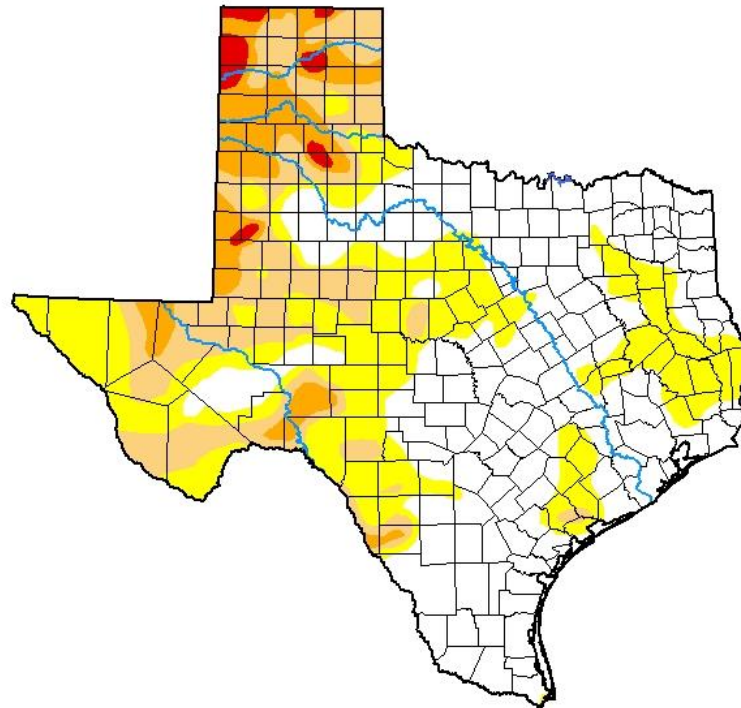


# U.S. DROUGHT MONITOR



- El Paso County is listed as “abnormally dry,” but not in drought.

## U.S. Drought Monitor Texas



**June 23, 2020**

(Released Thursday, Jun. 25, 2020)

Valid 8 a.m. EDT

Drought Conditions (Percent Area)

	None	D0-D4	D1-D4	D2-D4	D3-D4	D4
<b>Current</b>	47.22	52.78	24.82	9.17	1.38	0.00
<b>Last Week</b> <i>06-16-2020</i>	45.87	54.13	27.23	11.08	1.39	0.00
<b>3 Months Ago</b> <i>03-24-2020</i>	73.64	26.36	19.78	14.89	4.44	0.35
<b>Start of Calendar Year</b> <i>12-31-2019</i>	44.69	55.31	36.12	9.19	0.74	0.00
<b>Start of Water Year</b> <i>10-01-2019</i>	31.74	68.26	46.05	22.33	6.32	0.00
<b>One Year Ago</b> <i>06-25-2019</i>	95.84	4.16	1.93	0.23	0.00	0.00

Intensity:

None	D2 Severe Drought
D0 Abnormally Dry	D3 Extreme Drought
D1 Moderate Drought	D4 Exceptional Drought

The Drought Monitor focuses on broad-scale conditions. Local conditions may vary. For more information on the Drought Monitor, go to <https://droughtmonitor.unl.edu/About.aspx>

Author:

Adam Hartman  
NOAA/NWS/NCEP/CPC



[droughtmonitor.unl.edu](https://droughtmonitor.unl.edu)

Source:

<https://droughtmonitor.unl.edu/CurrentMap/StateDroughtMonitor.aspx?TX>

# DEPARTMENT OF PUBLIC HEALTH ORDER FOR FIREWORK SALE STANDS



- Issued by Dr. Hector Ocaranza, Health Authority City/County of El Paso
- Requirements include:
  - Six feet of social distance between clients
  - Limits on number of clients serviced at a time
  - Employees and clients must wear masks
  - Signs about hygiene, masks, social distance, not congregating in groups larger than 10
  - Employee health screenings
  - Encouraging touchless sales
  - Frequent cleaning of surfaces
  - Hand sanitizer for employees and clients

# FOURTH OF JULY ROAD CLOSURES

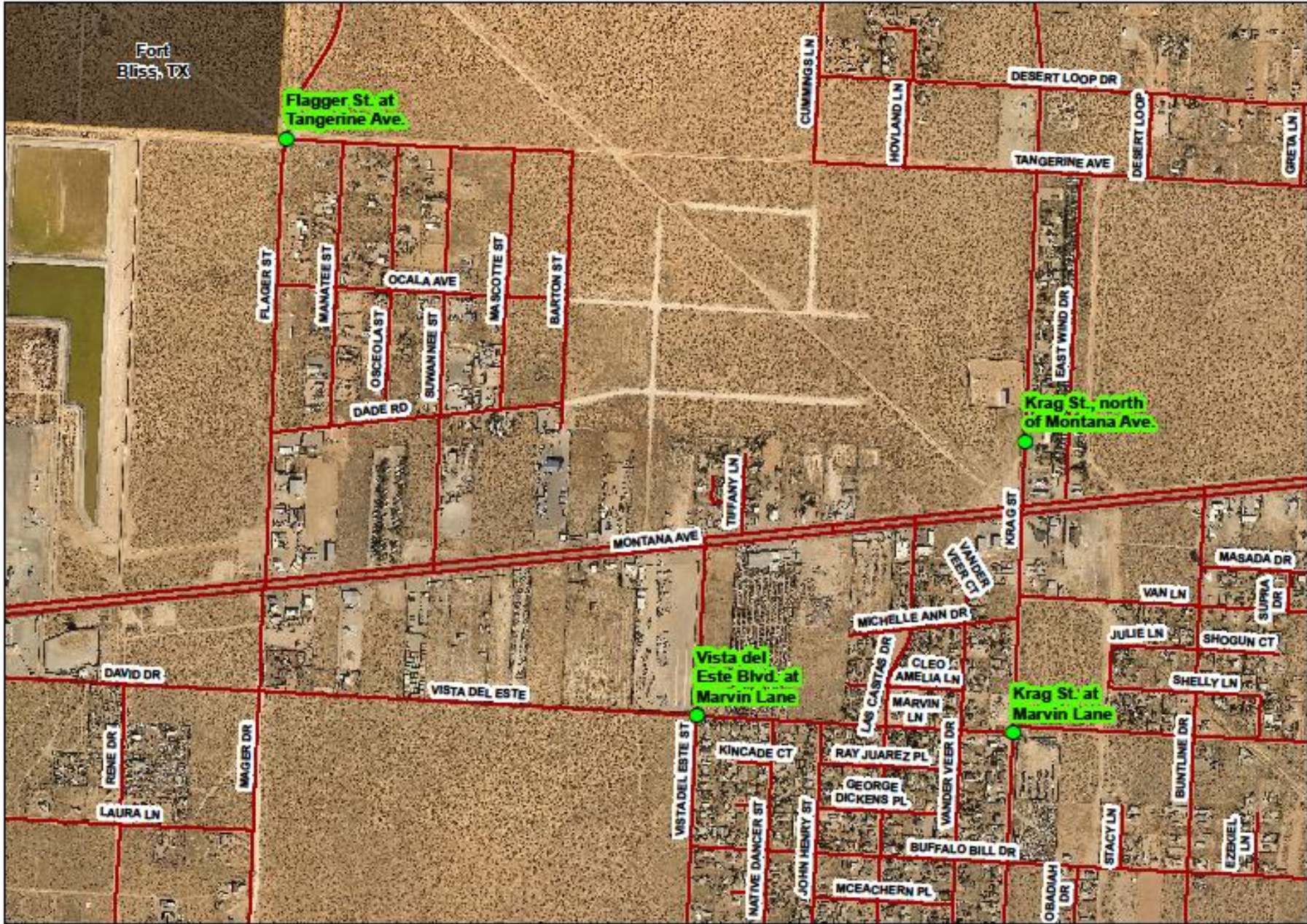


- East Montana Community:  
Flagger St. at Tangerine Ave.  
Krag St., north of Montana Ave.  
Krag St. at Marvin Lane  
Vista del Este Blvd. at Marvin Lane
  
- Mission Ridge Community:  
Stansbury Dr. at Colonial Bluff Rd.  
Mission Ridge Blvd. at Aircoupe



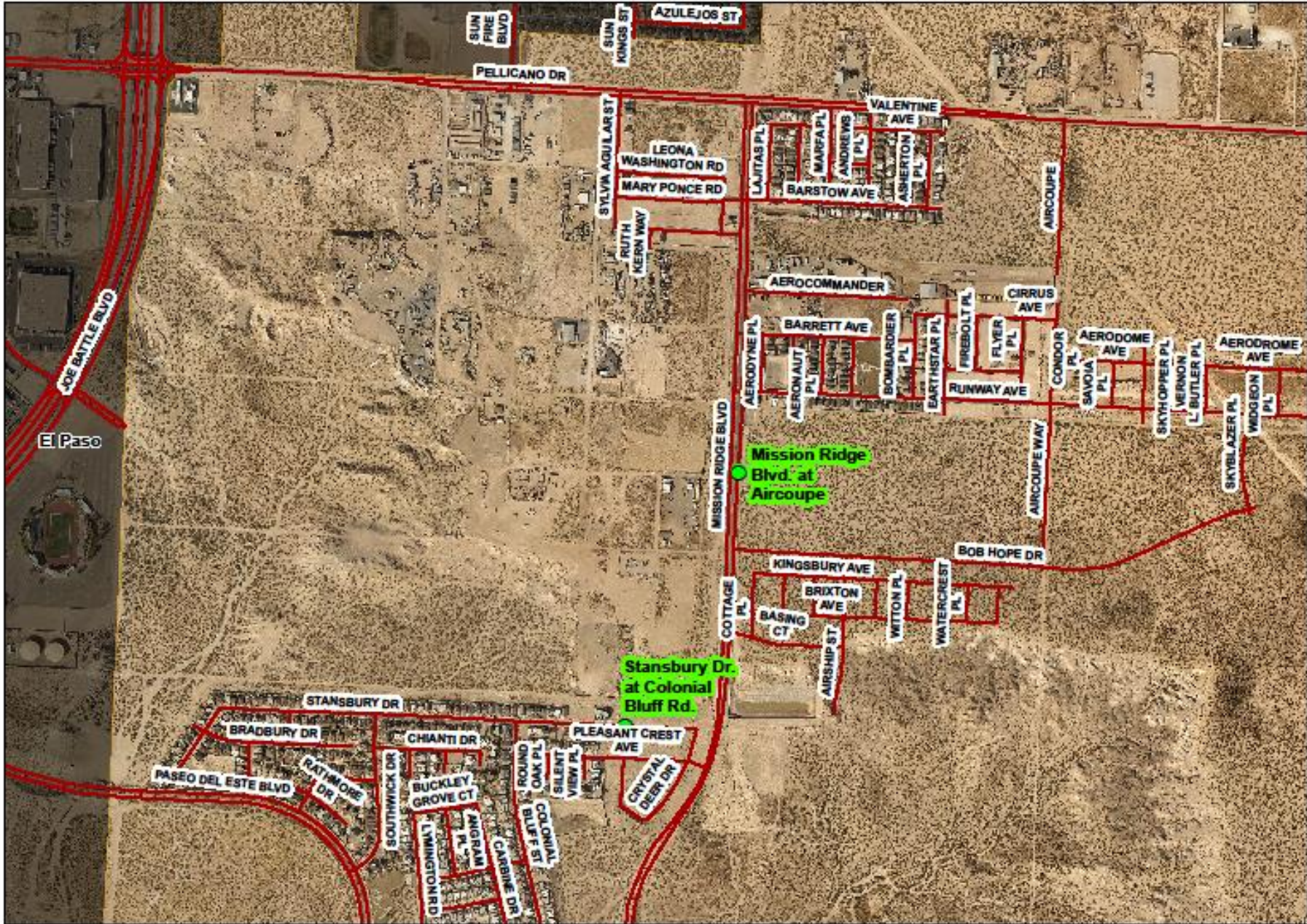


**4th of July Street Closures and Barricades  
East Montana Community**





**4th of July Street Closures and Barricades  
Mission Ridge Community**



# QUESTIONS?

